



STES

VISITING SUPPORTERS GUIDE

FORTUNA ARENA

PRAGUE | 2026



Completed by the Fan Development Manager of the Football Association of the Czech Republic in cooperation with the Faculty of Physical Culture of Palacký University in Olomouc.

CONTENT

1. **Welcome in the Forutna Arena**
2. **Transport**
3. **Stadium information**
4. **Safety at the stadium**
5. **Additional information**



WELCOME TO FORTUNA ARENA IN PRAGUE

We are delighted to welcome all football fans. This guide has been created to make planning your visit easier and to ensure that you enjoy it to the fullest.

Here you will find detailed information not only about the stadium itself but also about the services available to fans and visitors. We hope this guide will be a helpful companion.

Fortuna Arena, formerly Eden Arena, is the largest football stadium in the Czech Republic, with a seating capacity of 19,370. It is located in the Vršovice district of Prague and serves as the home ground of SK Slavia Praha.

The pitch is set five meters below street level, making Fortuna Arena a natural cauldron. The roof is supported by cables outside the stands, ensuring that no columns obstruct the spectators' view. It is currently the largest stadium in the Czech Republic and also boasts the highest average attendance in the Czech league.



**Česká fotbalová
reprezentace**

Czech national
football team



TRANSPORT

Airport

Václav Havel Airport Prague offers several convenient ways to reach Prague Main Railway Station (Praha hlavní nádraží), including direct buses, public transport, and taxis.

Option 1:

Route:

Travel time:

Price:

Frequency:

Operating hours:

Ticket purchase:

Airport Express (AE) – Direct Bus

Terminal 1 & 2 → Prague Main Railway Station

approx. 40 minutes

adult - 200 CZK - adult, 100 CZK - children,

every 30 minutes

5:30 AM – 10:00 PM

from the driver, at the airport information desk, or online via the DPP app

Option 2:

Bus No. 59

Route:

Travel time:

Price:

Ticket purchase:

Public Transport (Bus + Metro) – from the airport to the city

Terminal 2 → Nádraží Veveřavín (metro Line A – Green)

approx. 15 minutes

standard PID fare (42 CZK for 30 minutes, 55 CZK for 90 minutes – recommended for flexibility)

at ticket machines, via mobile app (PID Lítačka), or contactless payment onboard (orange/yellow validators)

Metro Line A

Route:

Transfer:

Total travel time:

Price:

Frequency:

Nádraží Veveřavín → Muzeum (approx. 11 minutes)

at Muzeum station, change to Line C → Prague Main Railway Station (approx. 2 minutes)

approx. 40 minutes

standard PID fare (same ticket from the bus is valid for the metro)

buses and metro run every few minutes during the day



TRANSPORT

Option 3:

Travel time:

Price:

Availability:

Taxi or Private Transport

approx. 20–30 minutes (depending on traffic)

approx. 500–700 CZK

official taxi stands are located directly in front of both terminals. Ride-hailing apps such as Bolt and Uber are widely available and often cheaper.



**Česká fotbalová
reprezentace**

Czech national
football team



GETTING TO THE STADIUM

Fortuna Arena is located at: U Slavie 1540/2a, 100 00 Prague. The stadium is accessible to all fans traveling by bus, metro, tram, or train.

By Car

Due to the excellent public transport connections, traveling by car is not recommended, as there will be no parking available for fans near the stadium.

By Taxi

You can use traditional taxi services or ride-hailing apps such as Bolt, Uber, or Liftago.



By Public Transport

Tram

- Stop: Slavia – Nádraží Eden
- Day routes: 2, 4, 6, 7, 19, 21, 22, 24
- Night routes: 95, 97, 99

Bus

- Stop: Slavia – Nádraží Eden
- Day routes: 135, 136, 150, 213
- Night route: 913

Metro

- Stop: Strašnická
- Line A – Green

Train

- Stop: Eden
- Routes: R49, S9

Bolt



Liftago



Please make sure to have a valid ticket for your chosen route!

**Česká fotbalová
reprezentace**

Czech national
football team



GETTING TO THE STADIUM



SMS ticket for bus, tram, metro

Validity area of the ticket	Validity	Price SMS*	Message format	Phone number
Prague	30 minutes	42 CZK	DPT42	90206
Prague	90 minutes	55 CZK	DPT55	90206
Prague	24 hours	150 CZK	DPT150	90206
Prague	72 hours	350 CZK	DPT350	90206

*The price does not include the price of the sms

**Česká fotbalová
reprezentace**

Czech national
football team



GETTING TO THE STADIUM

In Prague, you can buy tickets for buses, trams, and the metro in several ways:

Ticket Machines

Located at all metro stations, many tram stops, and major bus stops. They accept coins, cards, and contactless payments.

Mobile Apps

You can purchase digital tickets through apps such as [PID Lítačka](#), [DPP Info](#).

On Board (buses, trams)

Trams and buses are equipped with orange contactless ticket machines on board. You can pay directly by contactless bank card or mobile wallet (Apple Pay, Google Pay).

All tickets must be validated (stamped in the yellow machine) when entering the metro, bus, or tram—unless you've purchased it digitally or by contactless card, which is validated automatically.

On matchday, we recommend checking the current timetable on the official Prague Public Transport website: <https://www.dpp.cz/en>

Trains in Prague and the Czech Republic use a different ticketing system than trams, buses, and the metro. Here's how it works:

City Trains (Esko / S-lines): If you travel only within Prague city limits, you can usually use a regular Prague transport ticket (PID ticket) for trains. For example, from Eden Station near Fortuna Arena you can ride with a PID ticket.

You must buy and validate the PID ticket before boarding.



GETTING TO THE STADIUM

Regional or Long-Distance Trains: If you're traveling outside of Prague, you need a separate Czech Railways (ČD) or private carrier ticket.

Tickets can be bought at railway station ticket offices, in vending machines, online via the railway company's app or website, or directly from the conductor on board (sometimes with a small surcharge if no ticket office is available).

- Inside Prague = use the same ticket as for metro/tram/bus.
- Outside Prague = buy a separate railway company ticket.



STADIUM INFORMATION

Stadium entry

The stadium gates open 2 hours before kick-off. We recommend that fans arrive early due to security checks. Security checks will be thorough and carried out in accordance with the stadium regulations.

According to the stadium map, please enter your designated sector through the entrance indicated on your ticket. **Entrance 3 is reserved for away fans.**

Access to the stadium is possible with a valid ticket via turnstiles. Tickets can be either printed or electronic on your phone.

! Tickets purchased from third parties may not be accepted, and holders risk being denied entry to the stadium without compensation.

Supporters under the visible influence of alcohol or drugs will not be allowed to enter the stadium.



STADIUM INFORMATION

Refreshments

At the concession stands, payment is possible by card.



Away sector

The away section includes restrooms and food and drink stalls.

If you plan to bring choreography material, please notify us in advance at slo@fotbal.cz.

Entry to the stadium is prohibited with items restricted by the stadium regulations. **Prohibited items** will not be allowed inside the venue as per the stadium regulations.



**Česká fotbalová
reprezentace**

Czech national
football team

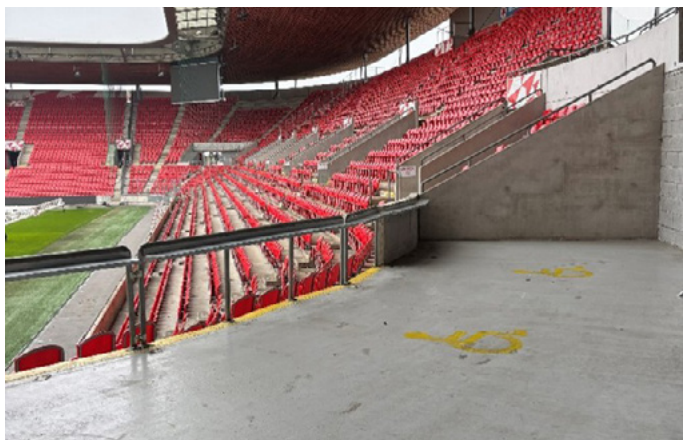


STADIUM INFORMATION

Disabled Fans

The away section does include a platform for fans with specific needs. If you require assistance, please contact us at fdm@fotbal.cz.

For any further inquiries, feel free to reach out to us at fdm@fotbal.cz.



Notice

We kindly ask fans not to bring large bags. In such cases, you will be required to place your luggage in the designed locker area, located behind the ticket offices at Entrance 4.

You will not be allowed into the venue with items prohibited by the visitor regulations. People attempting to bring in pyrotechnics, weapons, or other banned items will not be admitted and will be handed over to the Police of the Czech Republic. The list of prohibited items can be found below. The same applies to persons under the influence of alcohol or other intoxicating substances.

! No fans wearing or displaying symbols of the away national team will be admitted to the home sectors.

**Česká fotbalová
reprezentace**

Czech national
football team



STADIUM INFORMATION

According to the local decrees, there is **zero tolerance to the using of pyrotechnics of all kinds** both inside and outside the stadium. Violators of these rules can be fined, and may lead to police intervention. We kindly ask you to observe the rules and do not disturb public order, do not enter the roadways, and please use the sidewalk for your movement.

After the Match

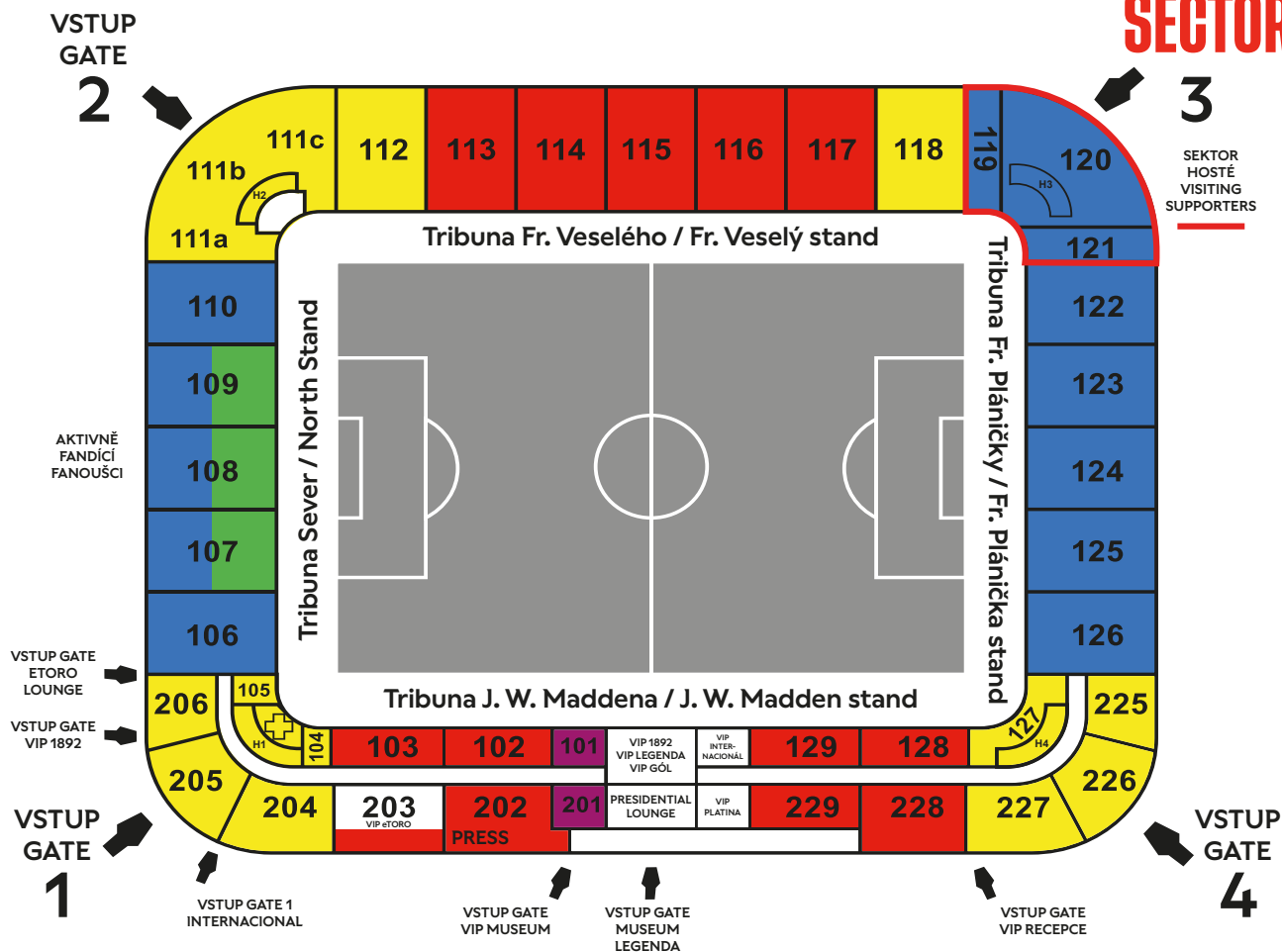
For high-risk matches, your departure from the arena may be delayed by security staff or the Czech Police. You will be informed in advance by the stadium announcer.

Please follow the instructions of security staff, the Czech Police, firefighters, emergency services, and the stadium announcer.



STADIUM INFORMATION

AWAY SECTORS



Česká fotbalová reprezentace

Czech national football team



FOOD & BEVERAGES

Food & Beverages

Food stalls accept both cash (Czech koruna) and card payments.

Hot Meals:

Sausages, Hot dog, Meatloaf, Hamburger, Fried cheese, French fries

Snacks:

Chips, Popcorn, Pretzels, Crispy snacks

Alcoholic Beverages:

Beer – Staropramen, Guinness

Non-Alcoholic Beverages:

Still and sparkling water, Coca-Cola, Fanta, Sprite, Cappy, Fuzetea, Coffee, Tea, Energy drinks.

The menu may slightly vary on match day.

If you have special dietary requirements, please inquire directly at the food stall.



SAFETY AT THE STADIUM

Visitors coming to the Arena are prohibited from bringing the following items or other items of a similar nature or purpose into the Arena and from keeping and/or using them in the Arena:

- racist, defamatory, vulgar or immoral propaganda material, in particular stickers,
- weapons of any kind, as well as all objects that are usable as chopping, striking or stabbing weapons,
- sprays, corrosive, flammable and dye substances or other containers with substances affecting health,
- matches, lighters and other fire starting devices,
- bottles, cups/jars, jugs, cans/tins or other items that consist of brittle, shattering or exceptionally hard material,
- bulky items such as ladder, stool, chair, box, stroller, car seat, or helmet/helmet,
- fireworks/rackets, flares, smoke bombs, and other pyrotechnic items including launchers,
- poles (including those designed for flags), banners including banners containing player jersey requests, except with the express permission of the owner,
- mechanically or otherwise powered instruments that cause noise; exceptions to this prohibition (e.g. for choreography) shall be decided by the Owner,
- alcoholic beverages, drugs of any kind, toxic and narcotic substances,
- animals (except for assistance and service dogs, and only with the express permission of the owner),
- laser pointers or similar electronic devices,
- suitcases, large bags, backpacks,
- cameras, camcorders and other devices for the purpose of professional sound or video recording, except with the prior express permission of the Arena owner,
- their own food and beverages, except for food and beverages demonstrably purchased from vendors organized by the Arena owner or tenant, baby food and food for persons with special dietary requirements and allergies, as demonstrated by the visitor.
- In addition, visitors are prohibited from:
 - to utter, disseminate or publicly display racist, defamatory, vulgar, offensive, provocative or contrary to good manners gestures, slogans or displays,



SAFETY AT THE STADIUM

- to climb or climb over buildings and facilities not intended for general use, in particular, facades, fences, walls, play area fencing, barriers, lighting equipment, camera stands, trees, poles of any kind and roofs,
- enter or attempt to enter areas not permitted for visitors (e.g. playing field, indoor areas, officials' rooms, administration building) c. Entering areas where the visitor does not have a valid permit (ticket),
- throwing objects or liquids of any kind on the playing field or in the visitor areas,
- setting fire, igniting or shooting pyrotechnic products (especially fireworks, flares, smoke bombs, cannons, etc.),
- destroy Arena facilities and equipment,
- sell tickets and any merchandise without permission,
- paint or deface buildings, equipment or pathways in the Arena,
- perform bodily functions outside the toilets or litter the Arena in any other way, in particular by throwing things and rubbish away,
- drive on pathways and areas without special permission,
- to take or use photographs and/or audio or visual recordings of the Arena and the event in any way for commercial purposes without the prior written consent of the Owner,
- to cover with banners, flags or in any other way the advertising panels placed in the Arena,
- to violate the ban imposed on the Arena,
- to smoke or use electronic cigarettes in the Arena premises, except for the premises reserved by the Owner. If this prohibition is violated, the visitor may be asked by the organizer or security service not to continue such behaviour or to leave the premises. The person is obliged to obey the request,
- physically or verbally assault or threaten anyone, especially other visitors to the Arena, members of the organizing and security services, representatives of UEFA, FAČR, LFA and SK Slavia Praha - fotbal a.s,
- cover your face with a scarf, hood or otherwise in order to make it difficult or impossible to identify your person when entering the Arena and throughout the Arena,
- prevent other visitors from moving freely around the Arena, in particular blocking the stairs leading from the corridors to the stands,



SAFETY AT THE STADIUM

- collect, transmit, create or disseminate any information, data or data related to the development of the matches, conduct or any other factor or fact in any match, or making any audio, visual or audio-visual recording or material in any match (whether by means of electronic devices or otherwise) for the purpose of any form of betting, gambling or commercial activity not previously authorised or for any other purpose in breach of these Conditions. Exceptions to this prohibition are where the Competition Organiser and the Owner expressly authorise or permit this. Mobile phones may only be used for personal, private use.

For more information, follow this [link](#).

In case of need, please contact members of the Anti-Conflict team at any time. They are your source of information



PROHIBITED ITEMS

Non-exhaustive list of prohibited items



Bags larger than A4



No smoking



Cane umbrellas
of any kind



Laser pointers



Bottles*, jugs,
cans, glass, etc.



Pyrotechnics



Face covering



Alcoholic drinks
and drugs*



Racist, xenophobic,
political & religious
propaganda materials



Flagpoles more than
1m in length &
1cm in diameter



Flags larger than
2.0m x 1.5m
(6.5' x 5.0')



Drones



Professional cameras
or video cameras



Weapons, explosives,
knives, or anything
that could be adapted
for use as a weapon



Promotional or
commercial objects
or materials



Mechanical or electronic
sound-emitting devices,
such as megaphones



Aerosol sprays

* Except on duly evidenced medical grounds

**Česká fotbalová
reprezentace**

Czech national
football team



FAN MEETING POINT

On the recommendation of the Police of the Czech Republic, the fan meeting point is usually set up at Old Town Square; however, the final meeting location is up to you. The march route will be communicated and specified closer to the match. From Old Town Square, fans will proceed to the metro and exit at Želivského station, from where they will march to the stadium accompanied by the Police of the Czech Republic.

According to the local decrees, there is **zero tolerance to the using of pyrotechnics of all kinds** both inside and outside the stadium. Violators of these rules can be fined, and may lead to police intervention. We kindly ask you to observe the rules and do not disturb public order, do not enter the roadways, and please use the sidewalk for your movement.



**Česká fotbalová
reprezentace**

Czech national
football team



ADDITIONAL INFORMATION

Travel insurance

We recommend that every fan takes out **travel insurance** before their trip, covering **medical care, accidents, liability for damages, and possible trip cancellation.**

Currency and Payments in the Czech Republic

- Official Currency: Czech Koruna (CZK, Kč)
- Approximate Exchange Rate: 1 EUR ≈ 24 CZK (we recommend checking the current rate before traveling)
- Payments: Most shops, restaurants, and hotels accept credit/debit cards (Visa, Mastercard), but some small businesses and stalls may require cash.
- ATMs: Widely available, but we recommend using bank ATMs (e.g., Česká spořitelna, Komerční banka, ČSOB) and avoiding dynamic currency conversion (DCC), which offers an unfavorable exchange rate.
- Currency Exchange: We recommend using exchange offices with transparent conditions (e.g., those in city centers or main train stations) and avoiding those with poor rates in tourist areas.

City of Prague

Located in the heart of Central Europe, Prague is the capital of the Czech Republic and one of the most beautiful cities in the world. Known as the “City of a Hundred Spires,” it enchants visitors with its stunning Gothic, Baroque, and Renaissance architecture, rich history, and vibrant cultural life. A UNESCO World Heritage Site since 1992, Prague is a dynamic city that seamlessly combines tradition with modern energy, making it a must-visit destination.

Key Facts

- **Population:** approximately 1,300,000
- **Region:** Prague (capital city)
- **Founded:** 9th century (developed around Prague Castle)
- **Known for:** Prague Castle, Charles Bridge, Old Town Square, Astronomical Clock, vibrant cultural scene

**Česká fotbalová
reprezentace**

Czech national
football team



ADDITIONAL INFORMATION

- **Language:** Czech (English widely spoken in tourist areas)
- **Currency:** Czech crown (CZK)
- **Time zone:** Central European Time (CET)

Top Attractions

- **Prague Castle** The largest ancient castle complex in the world, home to the Czech president and St. Vitus Cathedral. A symbol of Czech statehood.
- **Charles Bridge** A historic stone bridge from the 14th century, lined with baroque statues and offering stunning views of the Vltava River and Prague's skyline.
- **Old Town Square & Astronomical Clock** The heart of Prague's Old Town with colorful baroque buildings, Gothic churches, and the famous medieval clock that performs its hourly show.
- **Wenceslas Square** A vibrant boulevard at the center of modern Prague, known for shopping, nightlife, and historic events.
- **Petřín Hill & Observation Tower** A green oasis with gardens and a lookout tower resembling a smaller Eiffel Tower, offering panoramic city views.
- **Vyšehrad** A historic fortress with peaceful gardens, churches, and sweeping views of the Vltava River.

Getting Around

- **On Foot** - Prague's historic center is compact and very walkable. Most major sights are within easy walking distance.
- **Public Transportation** - The city operates one of the best transport systems in Europe, including metro, trams, and buses. Tickets can be purchased via machines, kiosks or [mobile apps](#).
- **Taxi and Ride-Hailing** - [Bolt](#), [Uber](#), and [Liftago](#) are popular services offering reliable transport. Official taxis are also available.
- **By Bike** - [Bike](#) and [e-scooter](#) rentals are increasingly common, especially for short distances along the river or within parks.



ADDITIONAL INFORMATION

Local Specialities and Food

- **Czech Beer** - Prague offers a wide range of famous Czech beers (Pilsner Urquell, Staropramen, Budweiser Budvar), best enjoyed in a traditional pub.
- **Svíčková (Beef Sirloin in Cream Sauce)** - A national dish served with dumplings, cranberry sauce, and cream.
- **Roast Pork with Dumplings and Sauerkraut** - Known as vepřo knedlo zelo, this is a classic Czech comfort food.
- **Goulash** - A hearty stew of beef and onions, often paired with bread dumplings and beer.
- **Trdelník** - A sweet pastry rolled in sugar and walnuts, popular with visitors in Prague's Old Town.
- **Local Restaurants** - For authentic Czech cuisine, try Lokál, U Fleků (one of the oldest breweries in Prague), or Mlejnice.

Safety and Security

Prague is generally considered a very safe city for visitors. The city center and main tourist areas, including the vicinity of Fortuna Arena, are well-patrolled by local police and safe both during the day and at night.

As in any major European city, we recommend keeping an eye on your personal belongings, particularly in crowded places such as public transport, train stations, or during large events.

Avoid poorly lit or deserted areas late at night and use official taxi services or trusted ride-hailing apps like Bolt, Uber, or Liftago if needed.

Be cautious of common tourist scams, including overpriced taxis, fake charity collectors, and street gambling. To avoid overcharging, always use official taxi services or ride-hailing apps.

Overall, by following basic safety guidelines, you can enjoy your stay in Prague without any concerns.



ADDITIONAL INFORMATION

Local laws and customs

Alcohol Consumption: The legal drinking age is 18 years. Drinking alcohol in public spaces is restricted in certain areas, including near schools and public transport stations.

Smoking: Smoking is prohibited in indoor public spaces, including restaurants, bars, and public transport stops.

Drugs: The possession and use of drugs are illegal and strictly punished.

Public Transport: Tickets must be purchased before boarding and validated in the designated machines. Ticket inspectors carry out frequent checks, and fines are issued on the spot for riding without a valid ticket. Make sure to keep your ticket with you until the end of your journey.

Emergency Numbers

- Emergency Services: 112 (International emergency hotline)
- Medical Emergency: 155
- Police: 158
- Firefighters: 150





STES